

Clamping Elements Type RCK 25



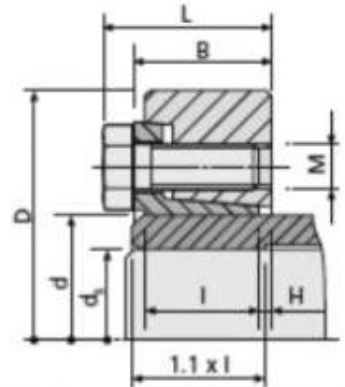
No need for a Torque Wrench with these Clamping elements, just tighten the screws in clockwise sequence in stages until the front faces of the flange and outer ring are aligned. This allows the transmission of torque values shown in the table. This overcomes the problems often encountered where units are either under or over tightened causing failures in transmission. There can also be a time saving in that powered tools can be used for the belt tightening.

Increased torque capacities are achieved by the use of larger screws. The single block design automatically provides parallel setting of the parts, thereby reducing the need for dynamic balancing.

Recommended tolerances

Hub Outside	d	f7
Hub Bore	ds	H7
Shaft Diameter $\leq 160\text{mm}$		h6
Shaft Diameter $\geq 160\text{mm}$		g6

Clamping Surfaces to be finished to Rz 3.2 μm or better.



Dimensions

Part No.	Dimensions mm							Torque Cap. M Nm	Axial Force F kN	Clamping Screws		Approx Weight kg
	ds	d	D	I	B	L	H			Size M	Torque Nm	
RCK25-68x115	50	68	115	24.5	29.5	35.0	3.5	2400	96	M8	34	1.4
	55							116				
	60							133				
RCK25-80x141	60	80	141	25	31.0	38.0	4	4300	143	M10	70	2.2
	65							166				
	70							186				
RCK25-95x170	70	95	170	36.5	43.5	50.5	4.5	7500	214	M10	70	4.8
	75							240				
	80							265				
RCK25-110x185	80	110	185	40.5	49	57	5	10600	320	M12	120	6.0
	85							348				
	90							378				
RCK25-125x215	90	125	215	45	53.5	61.5	5.5	16600	369	M12	120	9.1
	95							400				
	100							430				
RCK25-140x230	100	140	230	47	58	67	7	23500	470	M14	190	10.5
	105							495				
	115							565				
RCK25-150x263	110	150	263	51	63	72	7.5	31500	573	M14	190	16.0
	120							583				
	125							688				
RCK25-160x290	120	160	290	56	68	79	7.5	43000	750	M16	290	21.8
	130							754				
	135							874				
RCK25-170x300	130	170	300	56	69	80	8	55000	846	M16	290	23.0
	140							857				
	145							979				
RCK25-185x320	140	185	320	71.5	85.5	96.5	8	71000	1157	M16	290	32.6
	150							1173				
	155							1303				
RCK25-200x340	150	200	340	71.5	85.5	96.5	8	97000	1293	M16	290	36.1
	160							1300				
	165							1455				
RCK25-220x370	160	220	370	88	105	118	11	130000	1625	M20	570	51.3
	170							1765				
	180							1889				
RCK25-240x405	170	240	405	92	109	122	11	150000	1788	M20	570	64.3
	180							1933				
	190							2190				
RCK25-260x430	190	260	430	103	120	133	11	215000	2263	M20	570	78.8
	200							2400				
	220							2727				
RCK25-300x485	220	300	485	122	140	155	16	300000	3000	M24	990	111
	230							3318				
	250							3504				
RCK25-340x570	250	340	570	137	159	174	18	403000	4370	M24	990	182
	260							4288				
	280							4508				
RCK25-360x590	280	360	590	140	163	178	20	630000	4950	M24	990	193
	270							5089				
	290							5314				
RCK25-390x650	290	390	650	144	167	184	20	830000	5724	M27	1480	245
	300							5924				
	320							6413				
RCK25-420x670	320	420	670	165	186	203	20	1068000	6675	M27	1480	279
	330							6656				
	350							7434				
RCK25-440x740	340	440	740	172	194	211	20	1301000	7434	M27	1480	380
	370							7841				
	360							8120				
RCK25-460x770	370	460	770	172	195	212	20	1606000	8681	M27	1480	411
	390							8511				
	380							8789				
RCK25-480x800	390	480	800	188	214	233	22	1826000	9364	M30	1980	485
	410							9589				
	400							9892				
RCK25-500x850	410	500	850	190	215	234	22	2151000	10493	M30	1980	562
	430							10375				
	430							10688				
RCK25-530x850	440	530	850	198	230	249	22	2432000	11312	M30	1980	566
	460							9767				
	450							10000				
RCK25-560x940	460	560	940	213	242	261	22	2430000	10565	M30	1980	773
	480							12440				
	470							12774				
RCK25-590x960	480	590	960	228	260	279	28	2799000	13429	M30	1980	820
	490							13894				
	500							14242				
								3736000	14944			