

Clamping Elements Type RCK 19 & 20

Types RCK 19 & 20 are normally referred to as Clamping Discs, used to clamp externally onto thin walled hubs to lock them to the shaft. The design permits the use of large diameter shafts with small hub sizes, and is popular for connection of large sprocket and pulleys. The design provides for optimum concentricity, with high torque transmission. A number of shaft diameters can be accommodated by

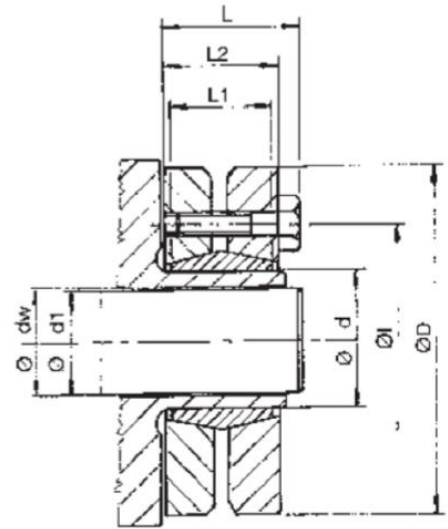
one size of unit, max., min. and an intermediate being shown in table.



Recommended tolerances

Hub Outside Ø:- h8
 *Hub Bore:- H6
 *Shaft Ø:- j6 below 30mm
 h6 30mm plus

*Clearance between hub bore and shaft must not exceed figures in table.



Dimensions

Part No.	Dimensions mm								Torque Cap. M Nm	Axial Force F kN	Clamping Screws		Approx Weight kg
	dw	Max* Clearance	d	D	L ₁	L ₂	L	X [†]			Size	Torque Nm	
RCK19-24x50	19	0.017	24	50	14	19.5	23.0	18	170	18	M5	4	0.2
	20								21				
	21								24				
	24								30				
RCK19-30x60	25	0.017	30	60	16	21.5	25.0	18	340	27	M5	4	0.3
	26								38				
	28								44				
	30								57				
RCK19-36x72	31	0.032	36	72	18	23.5	27.5	20	630	41	M6	12	0.4
	32								620	39			
	35								780	45			
	36								860	48			
RCK19-44x80	38	0.032	40	80	20	25.5	29.5	20	940	49	M6	12	0.6
	40								1160	58			
	42								1380	66			
	42								1160	55			
RCK19-50x90	45	0.032	50	90	22	27.5	31.5	25	1520	68	M6	12	0.8
	48								1880	78			
	48								1850	77			
	50								2200	88			
RCK19-62x110	52	0.048	62	110	23	30.5	34.5	25	2400	92	M6	12	1.3
	50								2000	80			
	55								2500	91			
	60								3150	105			
RCK19-68x115	55	0.048	68	115	23	30.5	34.5	25	2500	91	M6	12	1.4
	60								3150	105			
	65								3950	122			
	60								3200	107			
RCK19-75x138	65	0.048	75	138	25	32.5	37.8	30	3900	120	M8	30	1.7
	70								4600	131			
	65								4750	146			
	60								3200	107			
RCK19-80x145	70	0.048	80	145	25	32.5	37.8	30	3900	120	M8	30	1.9
	75								4600	131			
	65								4750	146			
	60								3200	107			
RCK19-90x155	75	0.048	90	155	30	39.0	44.3	35	6000	171	M8	30	2.9
	70								6900	197			
	75								7250	193			
	70								6900	197			
RCK19-100x170	75	0.048	100	170	34	44.0	49.3	35	7500	200	M8	30	4.0
	80								9000	225			
	75								7200	192			
	80								9000	225			
RCK19-110x185	85	0.048	110	185	39	50.0	56.4	40	10800	254	M10	59	5.3
	85								11000	259			
	90								13000	289			
	95								15000	316			
RCK19-125x215	95	0.069	125	215	42	54.0	60.4	40	15100	318	M10	59	7.9
	100								17600	352			
	105								20100	383			
	105								22000	419			
RCK19-140x230	110	0.069	140	230	46	60.5	68.0	45	25000	455	M12	100	9.0
	115								28000	487			
	115								31000	539			
	120								35000	583			
RCK19-155x265	125	0.069	155	265	50	64.5	72.0	50	39000	624	M16	250	16.5
	125								40000	640			
	130								44000	677			
	135								49000	726			
RCK19-165x290	135	0.079	165	290	56	71.0	81.0	55	55000	815	M16	250	17.5
	140								60000	857			
	145								65000	897			
	140								53300	761			
RCK19-185x330	145	0.079	185	330	71	86.0	96.0	70	58500	807	M16	250	27.1
	150								63500	847			
	155								73700	983			
	150								58500	807			
RCK19-190x330	150	0.079	190	330	71	86.0	96.0	70	79800	1030	M16	250	30.7
	155								85800	1073			
	155								85800	1073			
	160								85800	1073			

[†] X = minimum clearance required to remove a bolt.

For assembly and disassembly instructions refer to page 24.

* Max Clearance = dw-di.

Clamping Elements Type RCK 19 & 20

Dimensions

Part No.	Dimensions mm								Torque Cap. M Nm	Axial Force F kN	Clamping Screws		Approx Weight kg
	dw	Max* Clearance	d	D	L ₁	L ₂	L	X ¹			Size	Torque Nm	
RCK19-220x370	160	0.079	220	370	88	104	114	85	95000	1188	M16	250	40.8
	165								102000	1236			
	170								110000	1294			
RCK19-240x405	170	0.090	240	405	92	109	121	90	120000	1412	M20	490	51.3
	180								140000	1556			
	190								160000	1684			
RCK19-260x430	190	0.090	260	430	103	120	132	100	165000	1737	M20	490	63.3
	200								185000	1850			
	210								204000	1943			
RCK19-280x460	210	0.090	280	460	114	134	147	112	216000	2057	M20	490	79.6
	220								245000	2227			
	230								270000	2348			
RCK19-300x485	230	0.090	300	485	122	142	155	120	274000	2383	M20	490	92.8
	240								296000	2467			
	245								316000	2580			
RCK19-330x520	250	0.101	330	520	122	142	155	120	352000	2816	M20	490	103
	260								385000	2962			
	270								420000	3111			
RCK19-350x580	270	0.101	350	580	140	162	175	140	443000	3281	M20	490	157
	280								480000	3429			
	285								500000	3509			
RCK19-380x645	290	0.101	380	645	144	168	183	140	570000	3931	M24	840	205
	300								610000	4067			
	310								660000	4258			
RCK19-400x680	315	0.111	400	680	144	168	183	140	671000	4260	M24	840	228
	320								695000	4344			
	330								745000	4515			
RCK19-420x690	330	0.111	420	690	164	188	203	160	782000	4739	M24	840	258
	340								841000	4947			
	350								902000	5154			
RCK19-440x750	340	0.111	440	750	177	202	217	175	805000	4735	M24	840	342
	350								861000	4920			
	360								920000	5111			
RCK19-460x800	360	0.111	460	800	177	202	217	175	1000000	5556	M24	840	397
	370								1073000	5800			
	380								1141000	6005			
RCK19-480x800	380	0.111	480	800	188	213	228	185	1175000	6184	M24	840	404
	390								1250000	6410			
	400								1312000	6560			
RCK19-500x850	400	0.123	500	850	188	213	230	185	1314000	6570	M27	1250	466
	410								1382000	6741			
	420								1460000	6952			
RCK20-185x330	135	0.079	185	330	92	112	122	90	73000	1081	M16	250	36.0
	140								79000	1129			
	145								87000	1200			
RCK20-200x350	150	0.079	200	350	92	112	122	90	93000	1240	M16	250	39.8
	155								105000	1355			
	160								115000	1438			
RCK20-220x370	160	0.079	220	370	114	134	144	110	128000	1600	M16	250	52.9
	165								137000	1661			
	170								147000	1729			
RCK20-240x405	170	0.090	240	405	120	144	157	120	157000	1847	M20	490	66.9
	180								178000	1978			
	190								199000	2095			
RCK20-260x430	190	0.090	260	430	136	160	173	135	215000	2263	M20	490	83.6
	200								242000	2420			
	210								269000	2562			
RCK20-280x460	210	0.090	280	460	148	172	185	145	286000	2724	M20	490	103
	220								322000	2927			
	230								356000	3096			
RCK20-300x485	230	0.090	300	485	152	176	189	150	342000	2974	M20	490	116
	240								377000	3142			
	250								402000	3216			
RCK20-340x570	250	0.101	340	570	176	200	215	175	490000	3920	M24	840	193
	260								531000	4085			
	270								579000	4289			
RCK20-350x580	270	0.101	350	580	176	200	215	175	557000	4126	M24	840	197
	280								605000	4321			
	290								630000	4345			
RCK20-380x645	290	0.101	380	645	180	204	219	180	619000	4269	M24	840	256
	300								669000	4460			
	310								720000	4645			
RCK20-400x680	310	0.111	400	680	188	212	227	185	752000	4852	M24	840	298
	320								789000	4931			
	330								846000	5127			
RCK20-420x690	330	0.111	420	690	214	238	253	210	1000000	6061	M24	840	336
	340								1070000	6294			
	350								1142000	6526			
RCK20-440x750	340	0.111	440	750	224	252	269	220	1059000	6229	M27	1250	433
	350								1132000	6469			
	360								1205000	6694			
RCK20-460x770	360	0.111	460	770	224	252	269	220	1321000	7339	M27	1250	448
	370								1422000	7686			
	380								1502000	7905			
RCK20-480x800	380	0.111	480	800	246	274	291	240	1540000	8105	M27	1250	528
	390								1630000	8359			
	400								1724000	8620			
RCK20-500x850	400	0.123	500	850	246	274	291	240	1752000	8760	M27	1250	609
	410								1842000	8985			
	420								1943000	9252			

¹ X = minimum clearance required to remove a bolt.
 For assembly and disassembly instructions refer to page 24.
 * Max Clearance = dw-di.