



# TAB SHOOTER FOR SR2000

MODEL NO: **SR2000TS**

Thank you for purchasing a Sealey product. Manufactured to a high standard, this product will, if used according to these instructions, and properly maintained, give you years of trouble free performance.

**IMPORTANT:** PLEASE READ THESE INSTRUCTIONS CAREFULLY. NOTE THE SAFE OPERATIONAL REQUIREMENTS, WARNINGS & CAUTIONS. USE THE PRODUCT CORRECTLY AND WITH CARE FOR THE PURPOSE FOR WHICH IT IS INTENDED. FAILURE TO DO SO MAY CAUSE DAMAGE AND/OR PERSONAL INJURY AND WILL INVALIDATE THE WARRANTY. KEEP THESE INSTRUCTIONS SAFE FOR FUTURE USE.



Refer to instruction manual



Wear protective gloves



Wear eye protection



Wear face mask



Wear ear protection



Wear protective clothing



Wear welding mask



Do not use in the vicinity of a pacemaker



Indoor use only

## 1. SAFETY

- \* **DO NOT** touch heating parts with bare hands.
- \* **DO NOT** touch live electrical parts or electrodes with bare skin or wet clothing.
- \* **DO NOT** operate in the vicinity of containers under pressure, or in the presence of explosive dust, gases or fumes.
- ☐ **WARNING!** The magnetic fields created by high currents may affect the operation of pacemakers. Wearers of vital electronic equipment or those who have metallic surgical implant should consult their Doctor before using equipment.
- \* **DO NOT** wear clothing with metallic components e.g. belt buckles, buttons, zips when working with the equipment as it can cause such items to heat up.
- ✓ Remove any metallic components e.g. keys, chains, tools etc. while you operate the equipment and **DO NOT** wear any metallic objects such as jewellery, watches, piercings etc. on your body.
- \* **DO NOT** use the equipment in the rain or in humid conditions or immerse it in water.
- \* **DO NOT** leave the equipment unattended whilst turned on.
- \* **DO NOT** attempt to repair or service the equipment.
- ✓ Ensure area is adequately ventilated and dry.
- ✓ Ensure ambient temperature is between -10 to 40 °C.
- ✓ Avoid using in bright sunshine or rain.
- \* **DO NOT** use the equipment in an environment where the air is polluted with conductive dust or gases.
- ☐ **WARNING!** Fumes and smoke from hot/burning paints, adhesives etc. are toxic. Wear a suitable mask in such circumstances.

## 2. INTRODUCTION

Tab Shooter for use with SR2000. Holds multiple tabs (Model No. SR2000.T) and loads them semi automatically for fast and efficient use. Guide on side provides quick and easy alignment for next tab.

## 3. SPECIFICATION

Model No:.....SR2000TS  
 Nett Weight: ..... 0.29kg  
 Tab Pack of 10: ..... SR2000.T

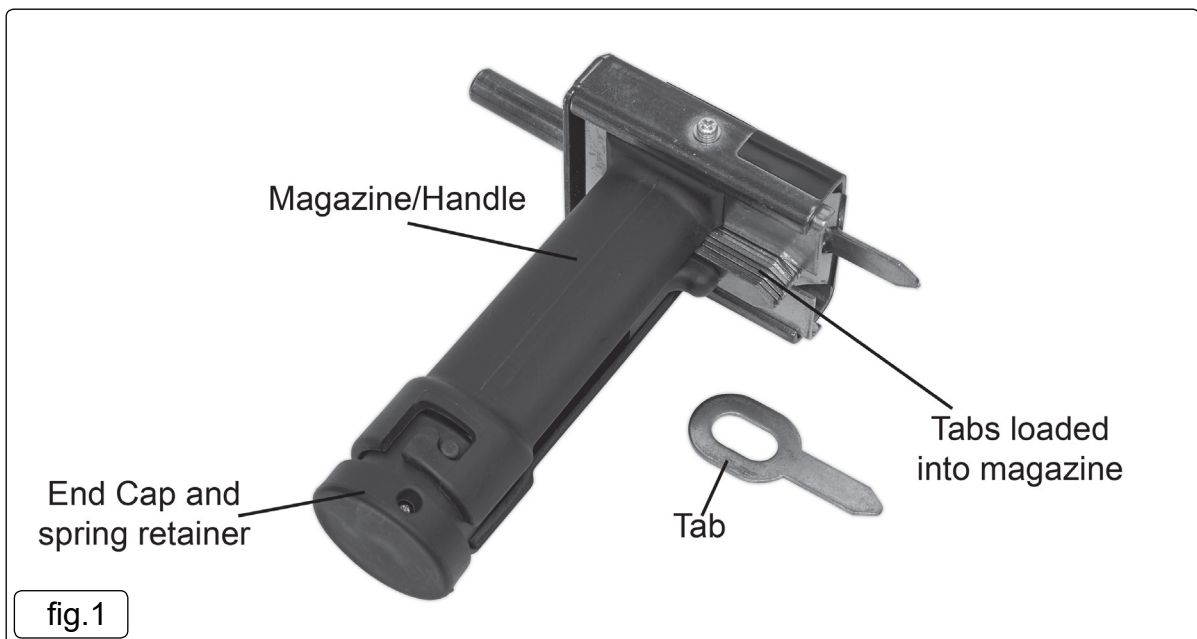
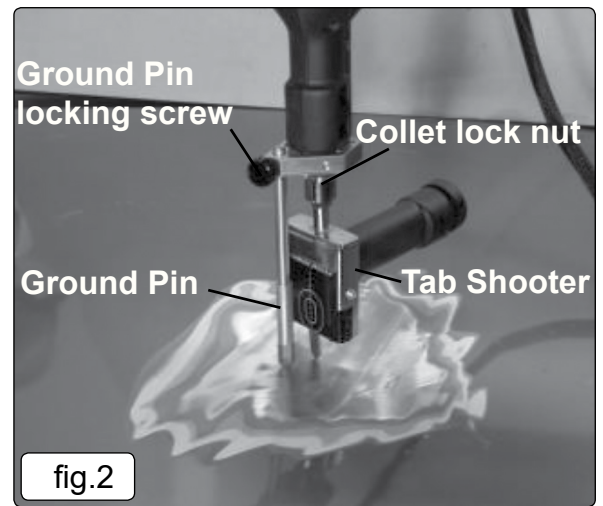


fig.1

## 4. OPERATION

- 4.1. Disconnect equipment from power supply.
  - 4.1.1. Insert tab shooter into collet of stud welder and secure with collet lock nut.
- 4.2. Insert tabs into the magazine.
  - 4.2.1. Slide handle of tab shooter down and up so that a tab is sticking out from the tab shooter.
  - 4.2.2. Adjust the ground pin such that the tip of the tab protrudes 4mm past the end of the ground pin (fig.2.)
- 4.3. Loading the tab shooter
  - 4.3.1. Unhook the end cap on the handle, be aware of the spring inside the handle. This keeps the tabs in-place inside the magazine.
- 4.4. Operating the tab shooter
  - 4.4.1. Once the tab shooter is set up in the machine, slide the handle down and then up. This action will make a tab protrude out of the bottom of the device. The tab will be held firmly by the tab shooter until you pull the machine away from the work.



### ENVIRONMENT PROTECTION

Recycle unwanted materials instead of disposing of them as waste. All tools, accessories and packaging should be sorted, taken to a recycling centre and disposed of in a manner which is compatible with the environment. When the product becomes completely unserviceable and requires disposal, drain any fluids (if applicable) into approved containers and dispose of the product and fluids according to local regulations.

**Note:** It is our policy to continually improve products and as such we reserve the right to alter data, specifications and component parts without prior notice.

**Important:** No Liability is accepted for incorrect use of this product.

**Warranty:** Guarantee is 12 months from purchase date, proof of which is required for any claim.

Sealey Group, Kempson Way, Suffolk Business Park, Bury St Edmunds, Suffolk. IP32 7AR



01284 757500



01284 703534



sales@sealey.co.uk



www.sealey.co.uk