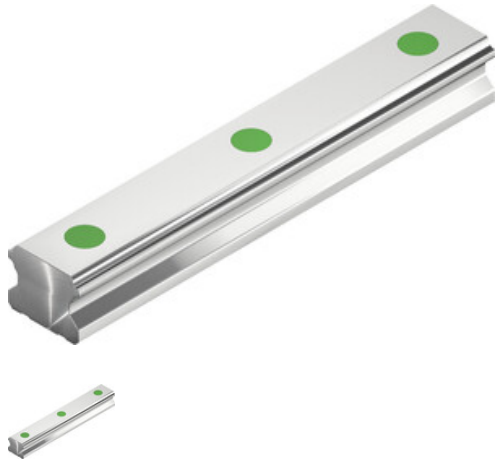


EGR35R4000C



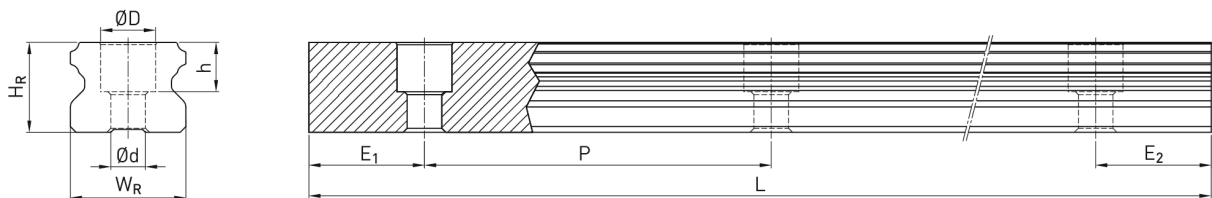
Type:  
EGR35R4000C

Accuracy class:  
C

### Hint

Rail in manufacturing length, please note the deviating tolerance specifications in the table.

### Dimensions



## Dimensions

$W_R$	Rail width	34	mm
$H_R$	Rail height	27,5	mm
D		14	mm
h		12	mm
d		9	mm
P	Hole pitch	80	mm
$L_{max}$	Max. length ( $E_1 = E_2 = P/2$ )	3.920	mm
$L_{min}$	Min. length	98	mm
$E_{1/2 min}$		9	mm
$E_{1/2 max}$		71	mm
	Weight	6,14	kg/m

## Dimensions (rail in production length)

L	Total length	4.000 +20	mm
E1		20 ±0,5	mm
E2		60 +20	mm