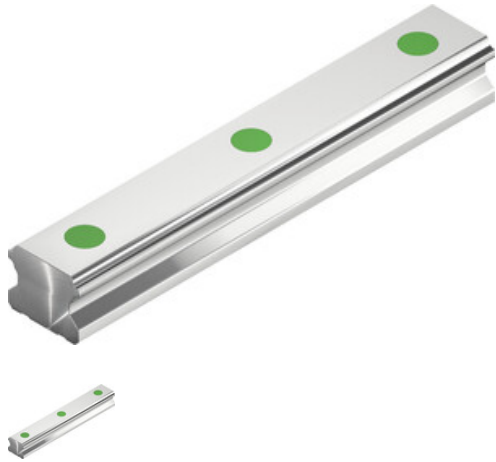


Data sheet

EGR30R4000C

HIWIN®



Type:
EGR30R4000C
Article number:
5-001979

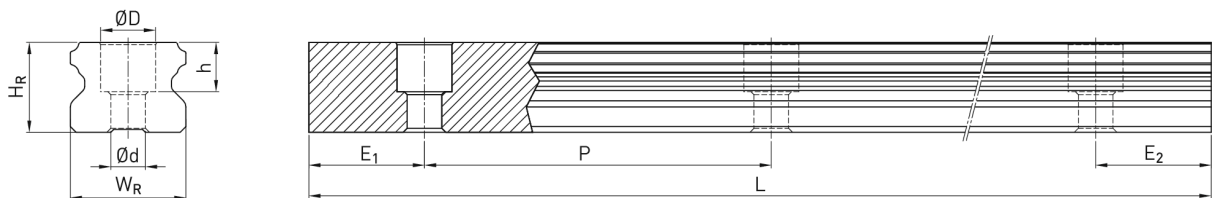
Accuracy class:
C

Hint

Rail in manufacturing length, please note the deviating tolerance specifications in the table.

TECHNICAL DETAILS

Dimensions



Dimensions

| | | | |
|---------------|-----------------------------------|-------|------|
| W_R | Rail width | 28 | mm |
| H_R | Rail height | 23 | mm |
| D | | 11 | mm |
| h | | 9 | mm |
| d | | 7 | mm |
| P | Hole pitch | 80 | mm |
| L_{max} | Max. length ($E_1 = E_2 = P/2$) | 3.920 | mm |
| L_{min} | Min. length | 96 | mm |
| $E_{1/2 min}$ | | 9 | mm |
| $E_{1/2 max}$ | | 71 | mm |
| | Weight | 4,35 | kg/m |

Dimensions (rail in production length)

| | | | |
|----|--------------|-----------|----|
| L | Total length | 4.000 +20 | mm |
| E1 | | 20 ±0,5 | mm |
| E2 | | 60 +20 | mm |