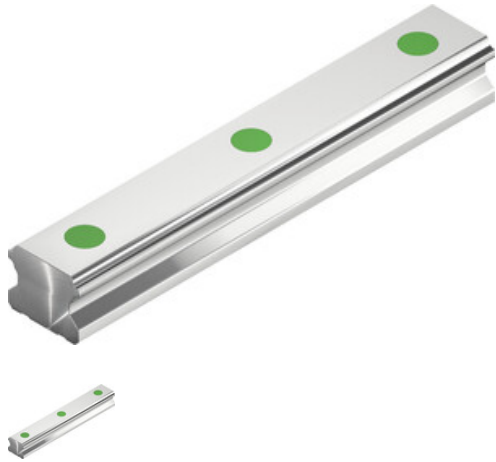


# Data sheet

EGR25R4000C

**HIWIN®**



Type:  
EGR25R4000C  
Article number:  
5-001534

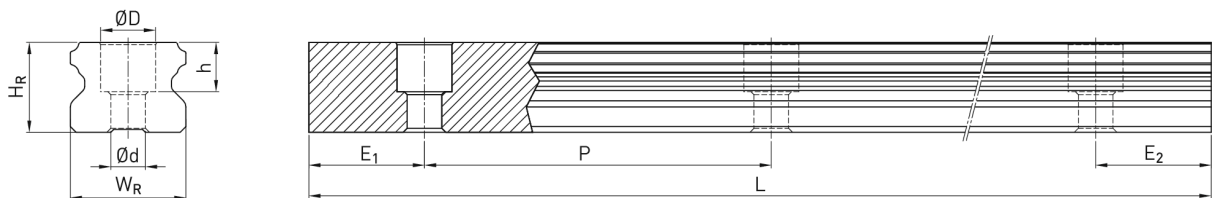
Accuracy class:  
C

## Hint

Rail in manufacturing length, please note the deviating tolerance specifications in the table.

## TECHNICAL DETAILS

### Dimensions



## Dimensions

$W_R$	Rail width	23	mm
$H_R$	Rail height	18	mm
D		11	mm
h		9	mm
d		7	mm
P	Hole pitch	60	mm
$L_{max}$	Max. length ( $E_1 = E_2 = P/2$ )	3.900	mm
$L_{min}$	Min. length	76	mm
$E_{1/2 min}$		8	mm
$E_{1/2 max}$		52	mm
	Weight	2,67	kg/m

## Dimensions (rail in production length)

L	Total length	4.000 +20	mm
E1		20 ±0,5	mm
E2		20 +20	mm