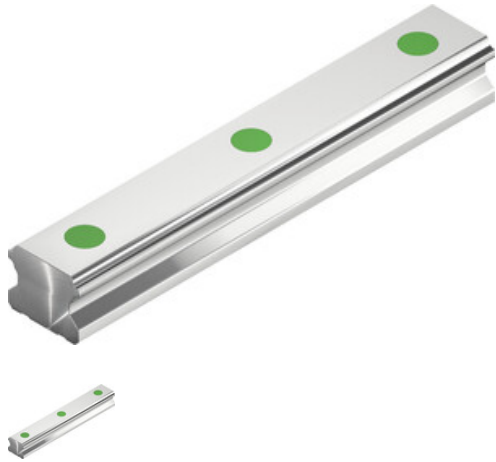


Data sheet

EGR20R4000C

HIWIN®



Type:
EGR20R4000C
Article number:
5-001978

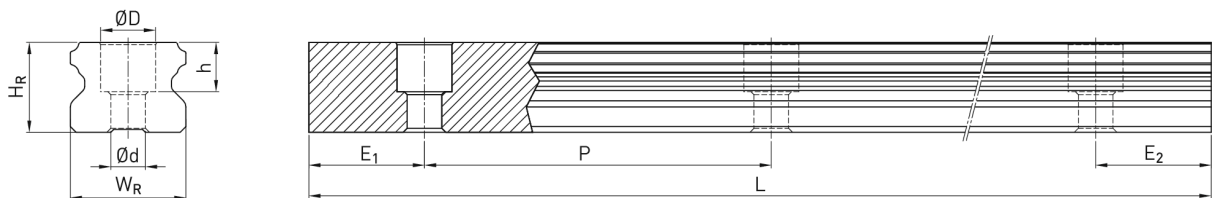
Accuracy class:
C

Hint

Rail in manufacturing length, please note the deviating tolerance specifications in the table.

TECHNICAL DETAILS

Dimensions



Dimensions

W_R	Rail width	20	mm
H_R	Rail height	15,5	mm
D		9,5	mm
h		8,5	mm
d		6	mm
P	Hole pitch	60	mm
L_{\max}	Max. length ($E_1 = E_2 = P/2$)	3.900	mm
L_{\min}	Min. length	74	mm
$E_{1/2 \min}$		7	mm
$E_{1/2 \max}$		53	mm
	Weight	2,08	kg/m

Dimensions (rail in production length)

L	Total length	4.000 +20	mm
E1		20 ±0,5	mm
E2		20 +20	mm