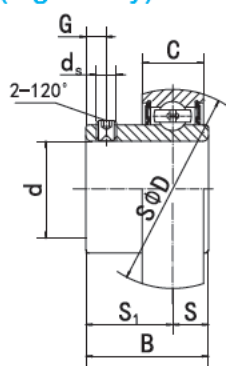
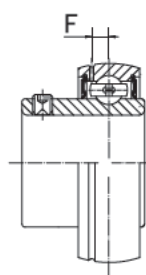


**SB2 (Light-duty)**

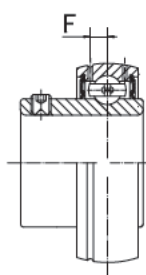
**Ball Bearings**



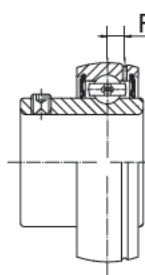
**SB2**



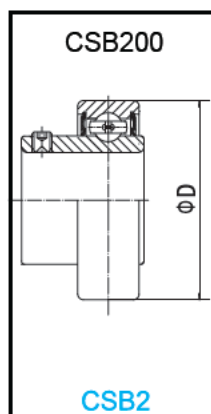
**SB2-G**



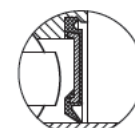
**SB2-G<sub>2</sub>**



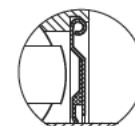
**SB2-RG**



**CSB2**



J type seal  
(Standard)



H type seal  
(Optional)

Bearing NO.	Dimensions ( mm / in. )									Dynamic load ratings (N)	Static load ratings (N)	Weight (kg)				
	d	D	B	C	S	S <sub>1</sub>	d <sub>s</sub>	F	G							
<b>SB201</b> 201-8	12 1/2	40 1.5748	22.0 0.8661	12 0.4724	6.0 0.236	16.0 0.630	M5X0.8 10-32UNF	3.4 0.134	4.5 0.177	9600	4600	0.10 0.10				
<b>SB202</b> 202-9 202-10	15 9/16 5/8	40 1.5748	22 0.8661	12 0.4724	6.0 0.236	16.0 0.630	M5X0.8 10-32UNF	3.4 0.134	4.5 0.177			9600	4600	0.10 0.10 0.10		
<b>SB203</b> 203-11	17 11/16	40 1.5748	22.0 0.8661	12 0.4724	6.0 0.236	16.0 0.630	M5X0.8 10-32UNF	3.4 0.134	4.5 0.177	9600	4600	0.09 0.09				
<b>SB204</b> 204-12	20 3/4	47 1.8504	25.0 0.9843	14 0.5512	7.0 0.276	18.0 0.709	M6X1 1/4-28UNF	4.2 0.165	4.5 0.177			12800	6600	0.13 0.14		
<b>SB205</b> 205-13 205-14 205-15 205-16	25 13/16 7/8 15/16 1	52 2.0472	27 1.063	15 0.5906	7.5 0.295	19.5 0.768	M6X1 1/4-28UNF	4.3 0.169	5.5 0.217	14000	7850	0.16 0.19 0.18 0.17 0.16				
<b>SB206</b> 206-17 206-18 206-19 206-20	30 1-1/16 1-1/8 1-3/16 1-1/4	62 2.4409	30 1.1811	16 0.6299	8.0 0.315	22.0 0.866	M6X1 1/4-28UNF	5 0.197	6 0.236			19450	11250	0.25 0.28 0.26 0.25 0.24		
<b>SB207</b> 207-20 207-21 207-22 207-23	35 1-1/4 1-5/16 1-3/8 1-7/16	72 2.8346	32 1.2598	17 0.6693	8.5 0.335	23.5 0.925	M8X1 5/16-24UNF	5.6 0.220	6.5 0.256			25700	15200	0.36 0.41 0.39 0.36 0.35		
<b>SB208</b> 208-24 208-24	40 1-1/2 1-9/16	80 3.1496	34 1.3386	18 0.7087	9.0 0.354	25.0 0.984	M8X1 5/16-24UNF	5.9 0.232	7 0.276					29500	18100	0.45 0.43 0.45
<b>SB209</b> 209-26 209-27 209-28	45 1-5/8 1-11/16 1-3/4	85 3.3465	41.2 1.622	19 0.748	10.2 0.402	31.0 1.22	M8X1 5/16-24UNF	6.1 0.240	8.2 0.323					32700	20900	0.54
<b>SB210</b> 210-29 210-30 210-31 210-32	50 1-13/16 1-7/8 1-15/16 2	90 3.5433	43.5 1.7126	20 0.7874	10.9 0.429	32.6 1.283	M10X1 3/8-24UNF	6.5 0.256	9.2 0.362	35000	23200					0.62
<b>SB211</b> 211-32 211-33 211-34 211-35	55 2 2-1/16 2-1/8 2-3/16	100 3.937	45.3 1.7835	21 0.8268	11.8 0.465	33.5 1.319	M10X1 3/8-24UNF	7 0.276	9.8 0.386	43300	29200	0.81				
<b>SB212</b> 212-36 212-37 212-38 212-39	60 2-1/4 2-5/16 2-3/8 2-7/16	110 4.3307	53.7 2.1142	22 0.8661	14.9 0.587	38.8 1.528	M10X1 3/8-24UNF	7.4 0.291	9.8 0.386			47700	32800	1.14		